

# 1927NM THULIUM LASER



## EONICAESTHETICS ETERNAL APPEAL

A FRESH PERSPECTIVE  
TO PERFECT SKIN



Sliding  
mode

Fractional  
mode

Private  
mode

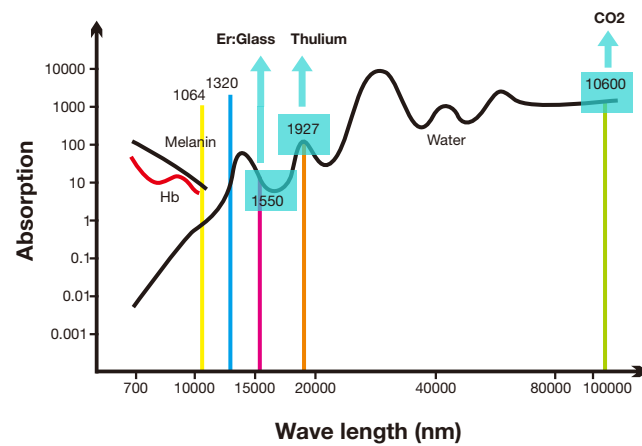
Non-invasive  
mode



# The Technology



## — 1927nm thulium Laser



The 1927nm wavelength excels in addressing hyperpigmentation while minimizing the chances of post-inflammatory hyperpigmentation, a potential issue associated with CO2.

- The 1927nm can be used alongside various treatments like chemical peels, improving overall skin rejuvenation outcomes and providing a more adaptable option than the more intense CO2.

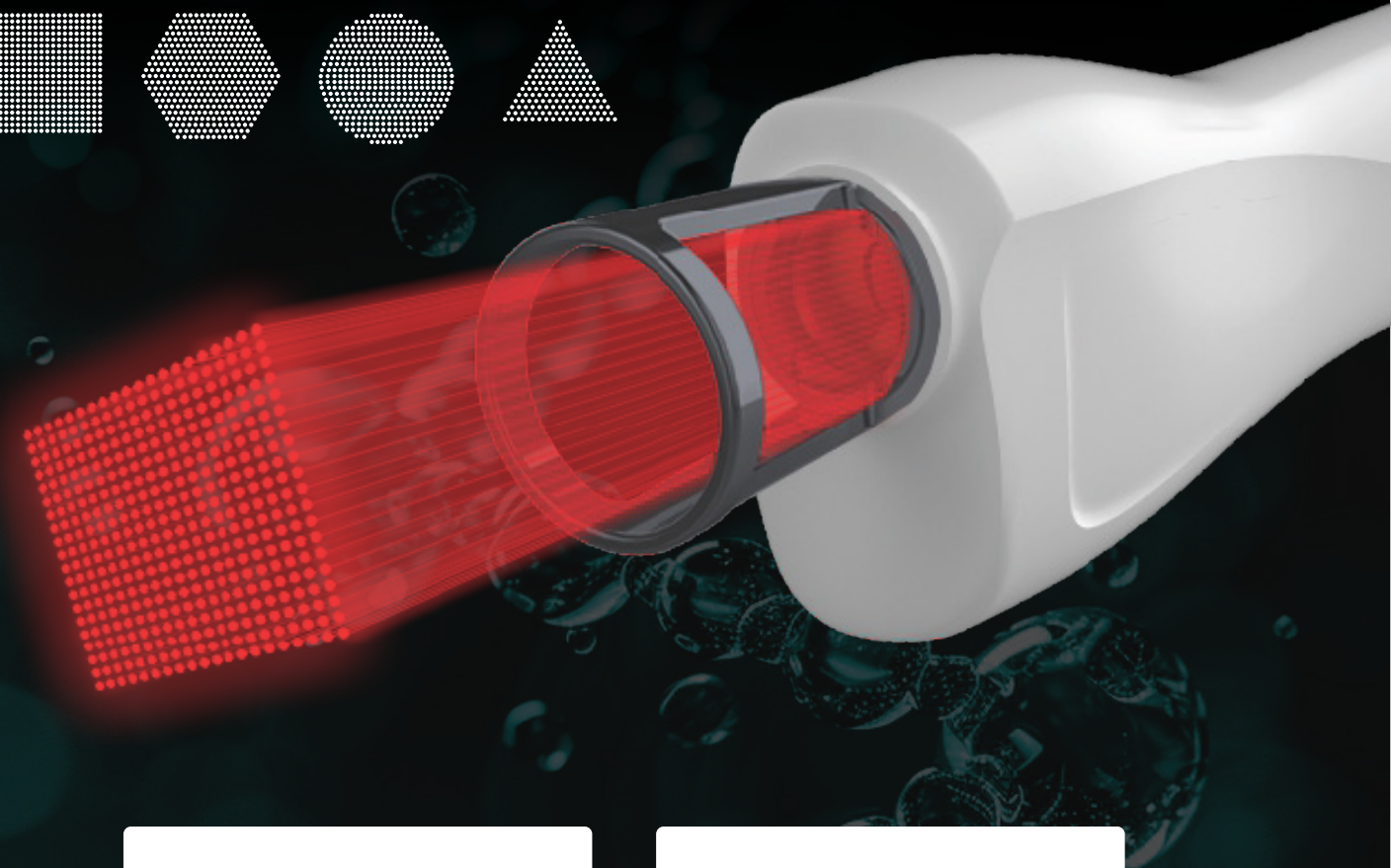
## MICRO-PEELING SKIN RECONSTRUCTION TECHNOLOGY

The thulium laser operates by reducing pore size, enhancing fine lines, and firming the skin through the stimulation of collagen production and the contraction of existing collagen. Utilizing micro-peeling skin reconstruction technology, it effectively addresses acne scars and surgical marks. As it penetrates, hemoglobin in blood vessels absorbs the energy more intensely, leading to blood coagulation and treatment of conditions like red blood filaments and acne inflammation. Post-treatment, the thulium laser encourages the regeneration of both the dermis and epidermis, aiding in restoring a healthy dermal state and combating inflammation. This process accelerates the absorption and metabolism of pigments, resulting in skin whitening and the lightening of spots.



## 4 MODES With 7 APPLICATORS

Addressing the skin's inner, middle, and outer layers while focusing on imperfections.



Tip(10mm) Tip(20mm) Tip(30mm)



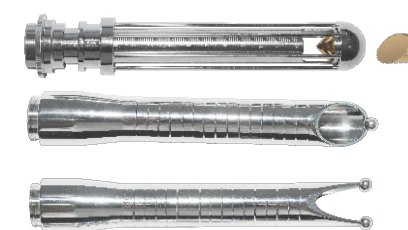
Fractional mode



Sliding mode



NON-INVASIVE MODE

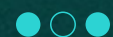


PRIVATE MODE



## (1927NM THULIUM LASER )

Produces a notably enhanced brightening effect.



Dull  
Complexion



Fine  
Wrinkles



Redness



Enlarged  
Pores



Acne  
Scars



Private  
Repair



# EONICAESTHETICS

ETERNAL APPEAL

## 01

### NON-INVASIVE MODE

This approach allows for deep penetration of the laser's thermal effects while keeping the epidermis safe and comfortable. It is used for various aesthetic treatments, including face lifting, and brow lifting.

## 02

### FRACTIONAL MODE

This approach customizes parameters such as energy, pulse width, pattern, and three types of probes according to treatment needs. It achieves multidimensional treatment of both superficial and deep layers through a single platform.

## 03

### SLIDING MODE

This approach uses lower treatment energy and higher repetition frequency, allowing the treatment energy to be evenly released and accumulated, safely and uniformly distributed to each treatment area.

## 04

### PRIVATE MODE

By promoting collagen formation and tissue regeneration, this approach improves women's intimate health and enhances the quality of life.

## FOUR TREATMENT MODES



EONICAESTHETICS  
ETERNAL APPEAL



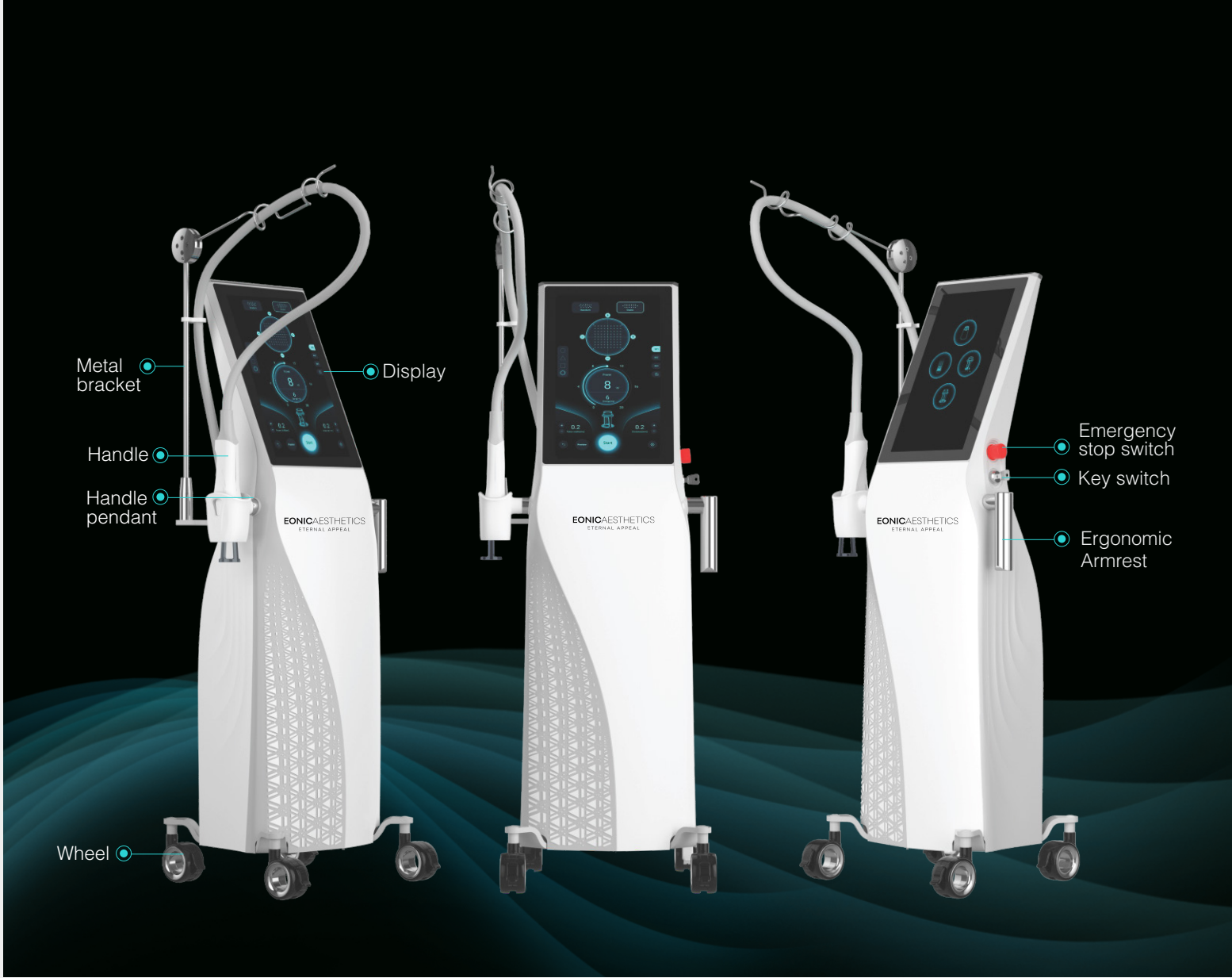
THE TRANSFORMATIVE POWER OF 1927NM AESTHETIC LASER.



# BEFORE & AFTER



EONICAESTHETICS  
ETERNAL APPEAL



## Specifications

Voltage:	AC220/50Hz , AC110/60H
Power:	1000W
Refrigeration method:	Air cooling
Working environment conditions:	Ambient temperature: 5 ℃~ 40 ℃
	Relative humidity: ≤80%
	Atmospheric pressure: 700KPa ~ 1060KPa
Output spot area:	6mm*6mm , 12mm*12mm , 20mm*20mm .